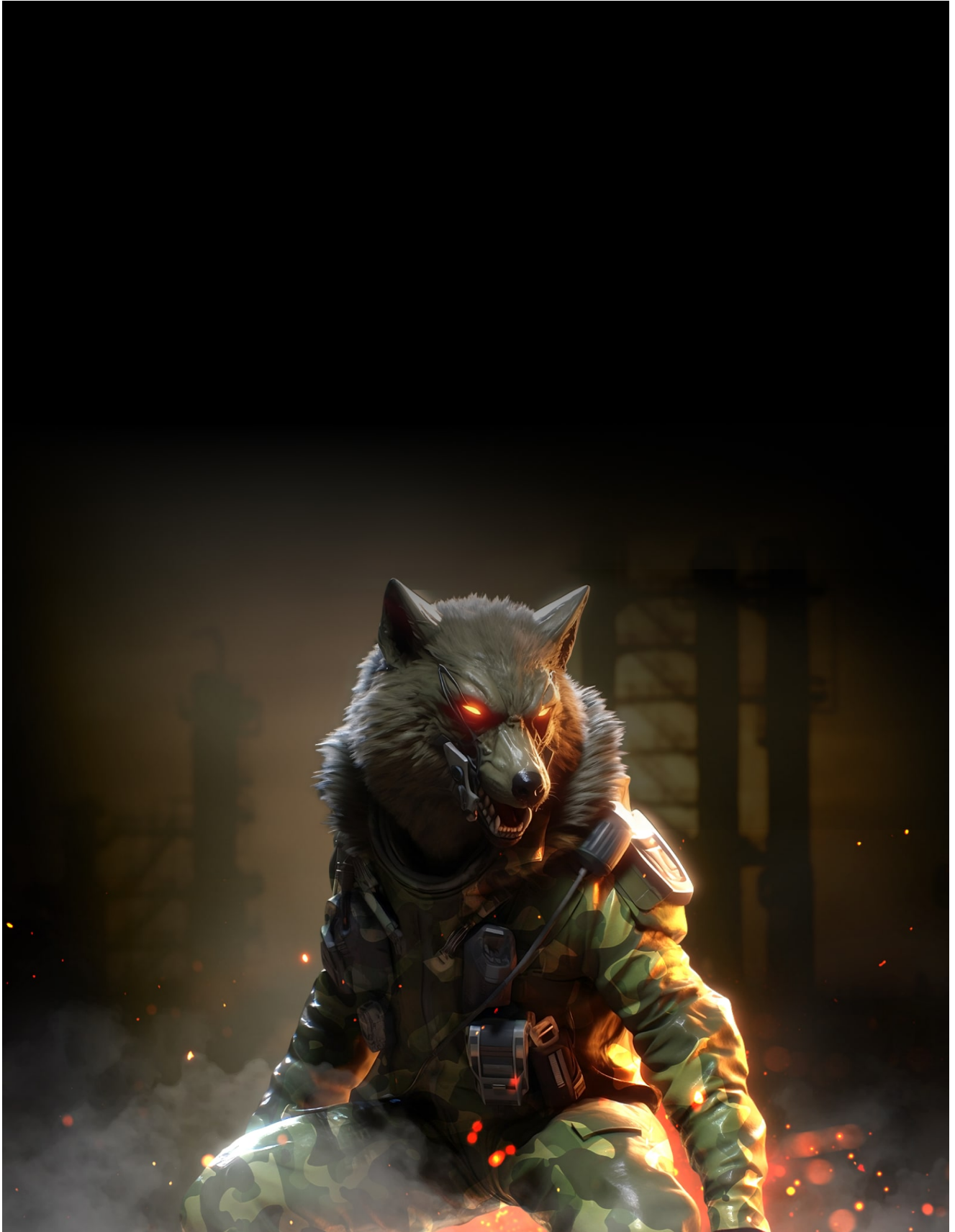


Core Werewolf targets the defense industry and critical infrastructure

 bi.zone/eng/expertise/blog/core-werewolf-protiv-opk-i-kriticheskoy-infrastruktury/



- [BI.ZONE](#)
- [Technical articles](#)

Amid the changing environment, Core Werewolf is one of the new cybercriminal groups actively engaged in espionage. The first attacks attempted by the adversaries can be traced back to 2021. They target Russian organizations associated with the defense industry and critical information infrastructure

```
@media only screen and (min-width: 320px) and (max-width: 380px) { .articleDetail
.quote__authorName, .articleDetail .quote__text, .eventProgramm__date,
.eventProgramm__title, .fs-h5, .h5, .headBlock__text, .headSection--news
.headSection__text, .headSection__text, .newsDetail .quote__authorName, .newsDetail
.quote__text, .participants__title, .popup__title, .sectionFullImage__text, .stepList .button,
.stepList .button span, .stepList__title, .toggleBox .iconLine__title, .toggleBox__title,
div.card__title, div.cFiltered__length, div.productDetail__subtitle, div.review__authorName,
div.timer__title, div.toggleBox .iconLine__title, div.toggleBox__title,
div.toggleEvent__bannerTitle, div.v-banner__title, h5 { font-size: 20px; line-height: 22px; } }
```